

"Superior Products are the User's Advantage."

SERVICE MANUAL FOR CIRCLE DYNAMICS INC. DLG - TOTE MIXER DRIVE (2018 Model)

WARNING

This product is intended for use in an industrial mix room environment. It is the user's responsibility to ensure that all forms of external energy are removed from the product prior to servicing to eliminate the risk of being injured by rotating parts during service.

FAILURE MODES

This product is only to be used in accordance with Circle Dynamics instructions for use and applications. Any other application may result in serious injury.

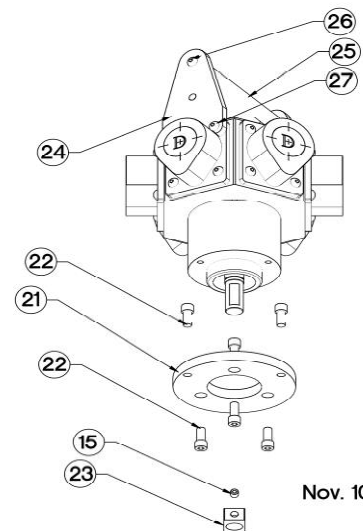
INSTALLATION (Refer to Fig. 1)

- Add Loctite 242 (loctite blue) onto set screw (15). Then align setscrew (15) in key (23) with flat on air motor shaft.
- Slide key onto motor shaft and push up tight to top shoulder. Securely tighten setscrew (15).
- Screw adaptor (21) to the underside of air motor using 3 cap screws (22).
- Set motor on the top plate (6) while aligning the key into the keyway in top of driveshaft (8).
- Align holes in adaptor and top plate and install three socket head cap screws (22). Tighten securely.
- Attach drive unit to top of tank with a counter-clockwise turn until tight.
- Lift mixer prop in the tote to engage the 4 L-shaped fingers in the drive shaft (8) with a counter-clockwise twist



DLG TOTE MOUNT MIXER

Figure 1/2



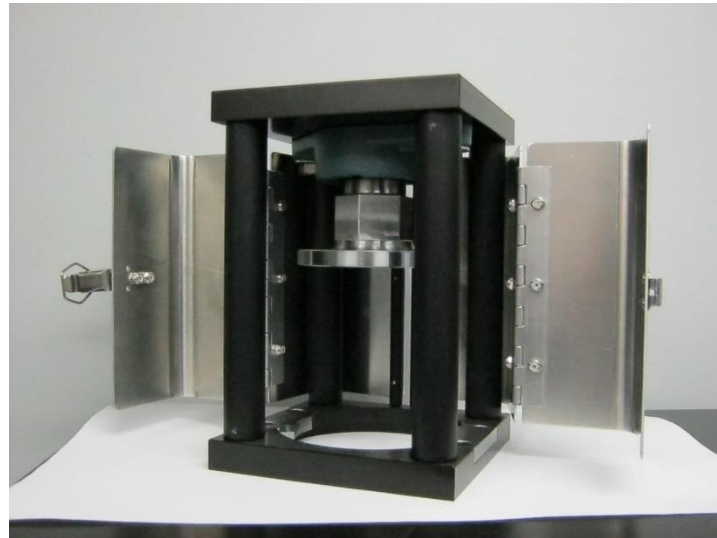
Nov. 10/2020

Connect air supply to appropriate port and adjust flow control to set speed.

REBUILD INSTRUCTIONS FOR CIRCLE DYNAMICS DLG DRIVE UNIT

DISASSEMBLY

- Disconnect any energy source and remove motor and drive unit by turning the mixer shaft clockwise to disengage, then turn the DLG clockwise to disengage from the tote.
- Remove cap screws (22) from adaptor (21) and remove air motor.
- Remove 2 bolts (9) and washers (10).
- Remove set screw (15) from coupling (14). Remove coupling (14) from the drive shaft (8).
- Remove snap ring (12) and press drive shaft (8) out from the bearing housing (11).
- Remove snap ring (27) from bearing housing (7).
- Using the notches on the bottom of the bearing housing (7) press the bearing (11) out of the Housing (7).
- Clean and dry all components and prepare for re-assembly.



ASSEMBLY

- Press new bearing (11) into the bearing housing (7).
- Install snap ring (27) into the bearing housing (7).
- Press drive shaft (8) into the bearing housing (7) and install snap ring (12).
- Install coupling (14) over the drive shaft (8). Add Loctite 242 (Loctite blue) to set screw (15) and install set screw into coupling (14). Tighten securely.
- Insert drive shaft / bearing assembly into place and install 2 bolts (9) and washers (11) tighten by hand only.

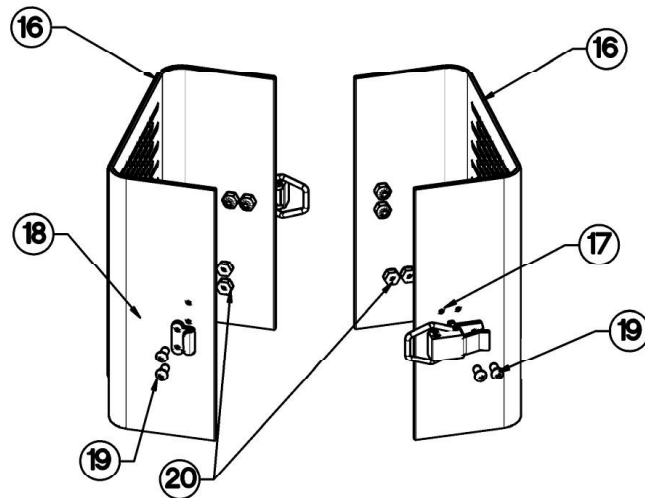
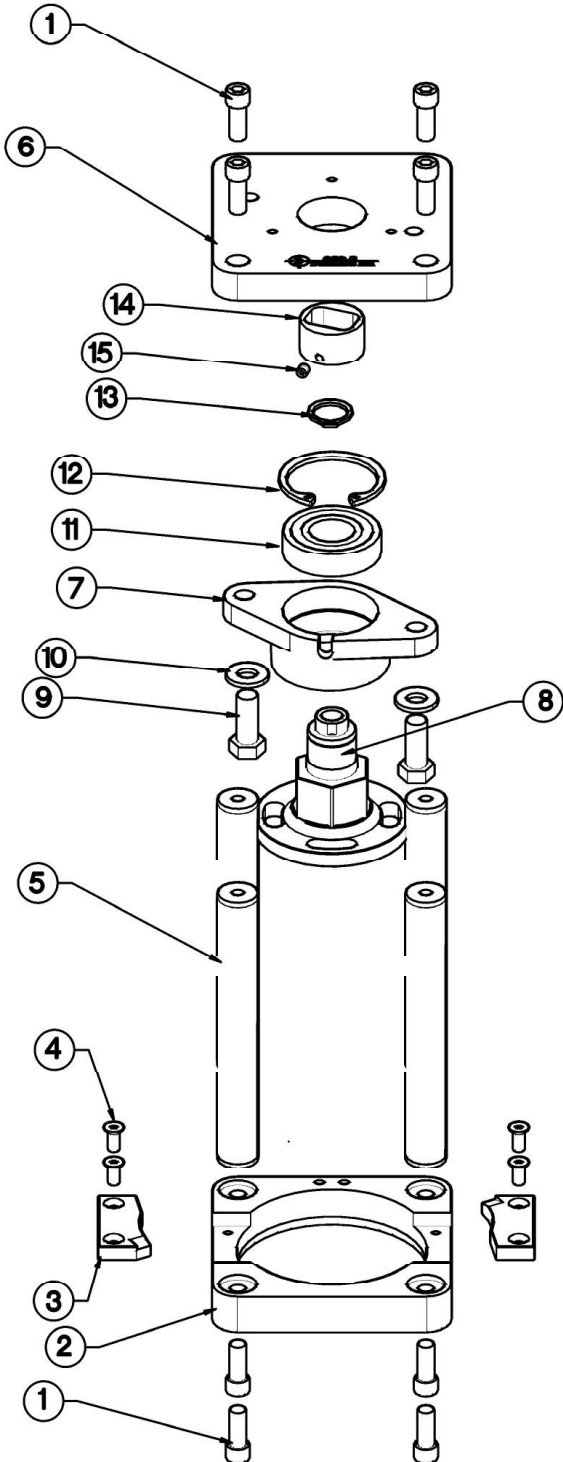
Refer to installation instructions for assembly to air motor.

- Once motor has been installed onto the DLG mixer, tighten 2 bolts (9) securely.

DLG TOTE MOUNT MIXER

Figure 2/2

KEY	PART #	QTY.	DESCRIPTION
1	60313	8	CAP SCREW
2	59131	1	BOTTOM PLATE
3	59129	2	LOCK
4	60314	4	FLAT HEAD SCREW
5	59128	4	POST
6	59130	1	TOP PLATE
7	60399	1	BEARING BLOCK
8	60403	1	DRIVE SHAFT
9	60315	2	BOLT
10	60316	2	FLAT WASHER
11	60400	1	BEARING
12	60401	1	SNAP RING
13	60402	1	SNAP RING
14	60379	1	COUPLING
15	60418	2	SET SCREW
16	60807	2	FINGER GUARD
17	500-009	1	STRIKE
18	500-025	1	CATCH
19	60779	8	BUTTONHEAD SCREW
20	60780	8	LOCK NUT
21	59132	1	MOTOR ADAPTOR
22	60322	6	CAP SCREWS
23	60378	1	KEY
24	59133	2	HANDLE BRACKET
25	60184	1	HANDLE GRIP
26	60354	2	CAP SCREWS
27	60353	4	CAP SCREWS



APR. 19/2021

TECHNICAL DATA

Maximum Speed: 1100 RPM

Weight < 12 lbs.


Guard: Fully Attached

Housing: Anodized Aluminum

Bearing: Self Aligning Sealed Ball

THE CIRCLE DYNAMICS INC. WARRANTY AND DISCLAIMERS

Items sold by Circle Dynamics Inc. and or all Doyle Products are warranted to be free from defects in material and workmanship for a period of one year from the date of purchase, provided said items are used according to Doyle Products said usages. Circle Dynamics Inc. liability is limited to the repair of, refund of purchase price paid for, or replacement in kind of at the sole option of Circle Dynamics Inc., any items proved defective, provided the allegedly defective items are returned to Circle Dynamics Inc. prepaid. There are no other warranties, expressed or implied, except as stated herein. There are no implied warranties of merchantability of fitness for a particular purpose, which are damages, if the possibility of such incidental or consequential damages has been made know to Circle Dynamics Inc., or is the direct result of a failure of a Doyle Product. Circle Dynamics Inc. reserves the right to discontinue the manufacture of any product or change product materials, design or specifications without notice.

<p>Copyright 2015 Circle Dynamics Inc. All rights reserved. Models and specifications subject to change without notice.</p>	
	<p>Circle Dynamics Inc. 171 A Rink Street, Suite 150 Peterborough, Ontario, Canada K9J 2J6 Tel: 1-705-768-3338 Fax: 1-705-740-1975 Email: jdoyle@circledynamicsinc.com Web: www.circledynamicsinc.com</p>