

*“Superior Products are the User’s Advantage.”*

## SERVICE MANUAL FOR CIRCLE DYNAMICS INC. DBG - BUNG MOUNT MIXER DRIVE

### WARNING

This product is intended for use in an industrial mix room environment. It is the user’s responsibility to ensure that all forms of external energy are removed from the product prior to servicing to eliminate the risk of being injured by rotating parts during service.



Fig. 1

### FAILURE MODES

This product is only to be used in accordance with Circle Dynamics instructions for use and applications. Any other application may result in serious injury.

### INSTALLATION (Refer to Fig. 1)

- Install *key* (13) onto motor. Add Loctite 242 (loctite blue) to the *set screw* (9). Install *set screw* into *key* (13) and secure tightly.
- Slide DBG mount onto the bottom of the air motor. Rotate until the *key* (13) slides into the *coupling* (6).
- Rotate the drive *housing* (3) until the three mounting holes line up with the threaded holes of the air motor.
- Install three *hex head screws* (10) and *washers* (11) and tighten securely.
- If a Wood’s Style plastic insert is used in the barrels, install the Circle Dynamics Mixer Guide Pilot (12).
- Install on barrel by screwing clockwise until tight, then tighten clamp *thumbscrews* (8) to top of barrel to prevent mixer from rotating.

**Connect air supply to appropriate port and adjust flow control to set speed.**

## REBUILD INSTRUCTIONS FOR CIRCLE DYNAMICS DBG DRIVE UNIT

### DISASSEMBLY

- 1) Disconnect any energy source and remove motor and drive unit from barrel by releasing *thumb screws* (8) and *turning drive unit* (3) counter-clockwise.
- 2) Remove *mounting bolts* (10) and *washers* (11) from air motor and pull away the DBG mount from the air motor.
- 3) Remove *drive shaft pilot bushing* (12) if used.
- 4) Remove *threaded insert* (1) from *housing* (3).
- 5) Remove *seals* (2) and discard.
- 6) Press *shaft* (7) out of *housing* (3).
- 7) Remove *snap ring* (4) from *drive shaft* (7).
- 8) Remove *set screw* (9) from *coupling* (6) and remove *coupling* from *driveshaft* (7).
- 9) Press *bearings* (5) from *drive shaft* (7) and discard.
- 10) Clean and dry components (1), (3), (4), (6), and (7) and prepare for re-assembly.



Fig. 2

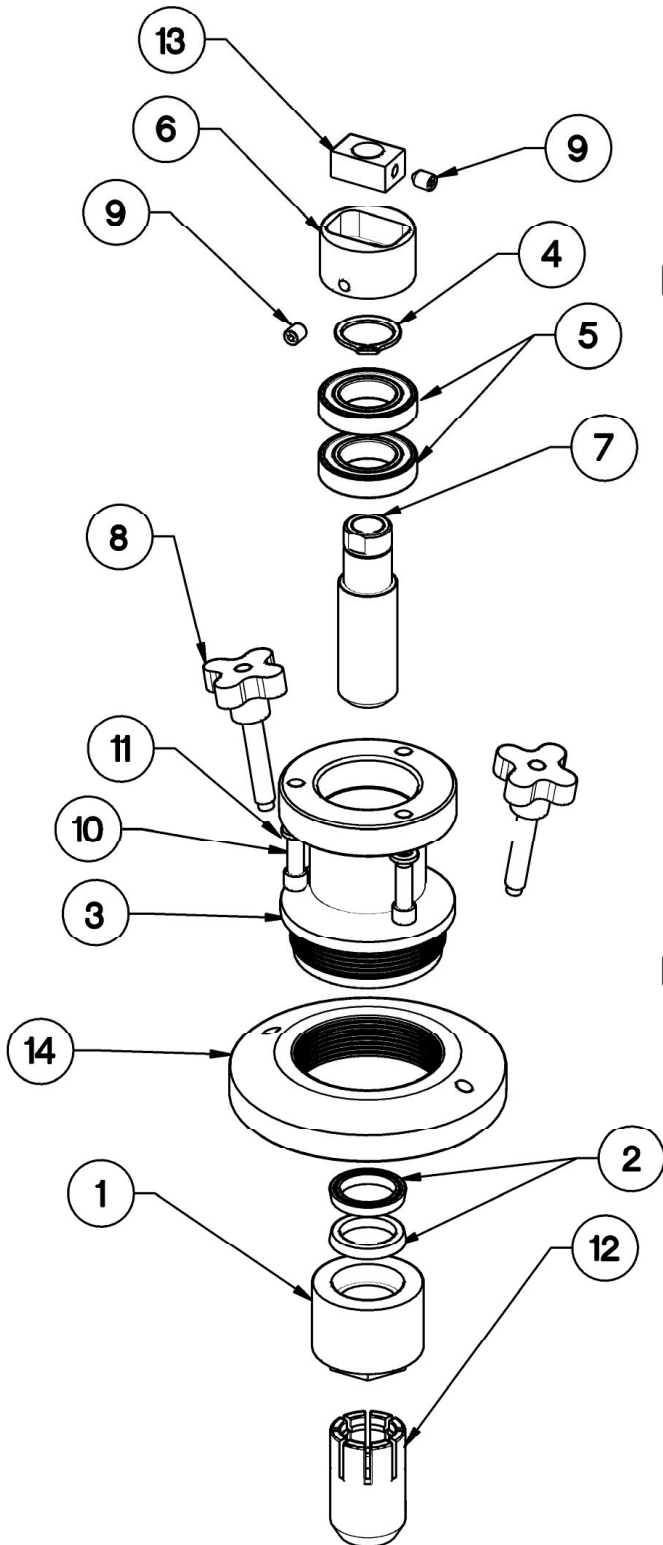
### ASSEMBLY

Rebuild kit 5910-2 contains parts (2) and (5).

- 1) Press *bearings* (5) on to *drive shaft* (7).
- 2) Install *snap ring* (4) on *drive shaft* (7).
- 3) Install *coupling* (6) onto *driveshaft* (7). Add Loctite 242 (loctite blue) to the *set screw* (9). Install set screw into *coupling* (6) and secure tightly.
- 4) Press assembled *drive shaft* (7) all the way into *housing* (3).
- 5) Install 1<sup>st</sup> *seal* (2) over *drive shaft* (7) using petroleum jelly with seal lip towards *housing* (3) and press up against housing.
- 6) Install second *seal* (2) in *threaded insert* (1) with lip first into the bore using petroleum jelly and press all the way to the bottom of the bore.
- 7) Install *threaded insert* (1) over *drive shaft* (7) and tighten into *housing* (3). Torque to 110 ft/lbs.

Refer to installation instructions (Page 1) for assembly to Air Motor.

### DBG BUNG MOUNT MIXER



KEY PART #	QTY.	DESCRIPTION	
1	59054	1	THREADED INSERT
2	13125	2	TEFLON SEAL
3	60597	1	DBG HOUSING
4	60446	1	SNAP RING
5	60447	2	BEARING
6	60379	1	COUPLING
7	60448	1	DRIVE SHAFT
8	98052	2	THUMB SCREWS
9	92695	2	SETSCREW
10	91287	3	HEX HEAD BOLT
11	93475	3	WASHER
12	60100	1	MIXER SHAFT PILOT
13	60378	1	KEY
14	60598	1	DBG PLATE

KEY PART #	QTY.	DESCRIPTION	
15	5910-2	1	DRIVE UNIT REPAIR KIT
			Contains:
		2	#5 60447 BEARING
		2	#2 13125 SEAL

MAY 15/19

## TECHNICAL DATA

Maximum Speed: 1100 RPM

Seal Carrier Housing: 303 SS

Seals: Teflon


Housing: Anodized Aluminum

Bearings: Sealed Ball

Shaft: 440C SS

## THE CIRCLE DYNAMICS INC. WARRANTY AND DISCLAMERS

Items sold by Circle Dynamics Inc. and or all Doyle Products are warranted to be free from defects in material and workmanship for a period of one year from the date of purchase, provided said items are used according to Doyle Products said usages. Circle Dynamics Inc. liability is limited to the repair of, refund of purchase price paid for, or replacement in kind of at the sole option of Circle Dynamics Inc., any items proved defective, provided the allegedly defective items are returned to Circle Dynamics Inc. prepaid. There are no other warranties, expressed or implied, except as stated herein. There are no implied warranties of merchantability of fitness for a particular purpose, which are damages, if the possibility of such incidental or consequential damages has been made know to Circle Dynamics Inc., or is the direct result of a failure of a Doyle Product. Circle Dynamics Inc. reserves the right to discontinue the manufacture of any product or change product materials, design or specifications without notice.

<p>Patent Pending Copyright 2011 Circle Dynamics Inc. All rights reserved. Models and specifications subject to change without notice.</p>	 <p><b>Circle Dynamics Inc.</b> 171 A Rink Street, Suite 150 Peterborough, Ontario, Canada K9J 2J6 Tel: 1-705-768-3338 Fax: 1-705-740-1975 Email: <a href="mailto:jdoyle@circledynamicsinc.com">jdoyle@circledynamicsinc.com</a> Web: <a href="http://www.circledynamicsinc.com">www.circledynamicsinc.com</a></p>
--	--