

"Superior Products are the User's Advantage."

SERVICE MANUAL FOR CIRCLE DYNAMICS INC. 3" DSU - SANITARY MOUNT MIXER DRIVE

WARNING

This product is intended for use in an industrial mix room environment. It is the user's responsibility to ensure that all forms of external energy are removed from the product prior to servicing to eliminate the risk of being injured by rotating parts during service.

FAILURE MODES

This product is only to be used in accordance with Circle Dynamics instructions for use and applications. Any other application may result in serious injury.



INSTALLATION (Refer to Fig. 1)

- Install *key* (14) onto Doyle air motor. Add Loctite 242 (loctite blue) to the *set screw* (8). Install *set screw* into *key* (14) and secure tightly.
- Slide 3DSY mount onto the bottom of the air motor. Rotate until the *key* (14) slides into the *coupling* (13).
- Rotate the drive *housing* (1) until the three mounting holes line up with the three threaded holes on the air motor.
- Install three *hex head bolt* (9) and *washers* (10) and tighten securely.
- Attach drive unit to top of tank using a 3-inch sanitary clamp and tighten securely.

Fig. 1

Connect air supply to appropriate port and adjust flow control to set speed.

REBUILD INSTRUCTIONS FOR CIRCLE DYNAMICS DSU DRIVE UNIT

DISASSEMBLY

- 1) Disconnect any energy source and remove motor and drive unit from tank by removing 3-inch sanitary clamp.
- 2) Remove *mounting bolts* (9) and *washers* (10) from air motor.
- 3) Pull 3DSY mount away from Doyle air Motor.
- 4) Press *shaft* (7) from *housing* (1).
- 5) Remove *set screw* (8) from *coupling* (13) and remove *coupling* from *driveshaft* (7).
- 6) Remove *snap ring* (4) from *drive shaft* (7).
- 7) Press *bearings* (5) and *bearing spacer* (6) from *drive shaft* (7). Discard *bearings* (5).
- 8) Remove *seal retainer plate* (3) from *housing* (1).
- 9) Remove *seals* (2) from *housing* (1) and discard.
- 10) Clean and dry components (1), (3), (4), (6), and (7) and prepare for re-assembly.



Fig. 2

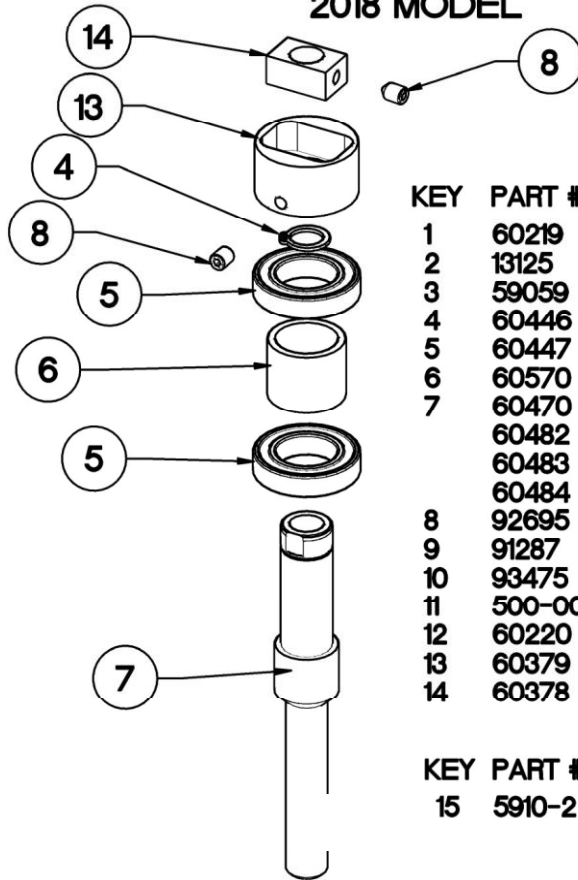
ASSEMBLY

Rebuild kit 5910-2 contains parts (2) and (5).

- 1) Press *bearings* (5) and *bearing spacer* (6) on to *drive shaft* (7).
- 2) Install *snap ring* (4) on *drive shaft* (7).
- 3) Install one *seal* (2) in *housing* (1) with lip facing down.
- 4) Install second *seal* (2) in *housing* (1) with lip facing up.
- 5) Install *seal retainer plate* (3) with recess facing up.
- 6) Press *assembled drive shaft unit* (7) all the way into *housing* (1).
- 7) Install *coupling* (13) onto *driveshaft* (7). Install *set screw* (8) into *coupling* (13).

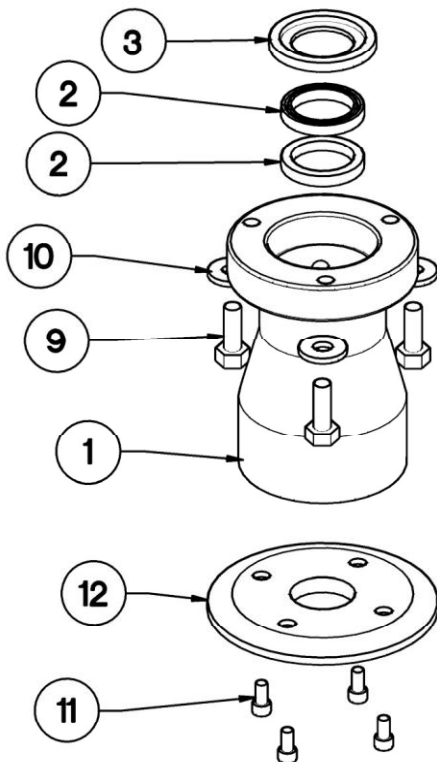
Refer to installation instructions for assembly to Air Motor

**3" DSY
SANITARY MOUNT MIXER
2018 MODEL**



KEY	PART #	QTY.	DESCRIPTION
1	60219	1	HOUSING
2	13125	2	TEFLON SEAL
3	59059	1	SEAL RETAINER RING
4	60446	1	SNAP RING
5	60447	2	BEARING
6	60570	1	SPACER
7	60470	1	5M - 5/8" MALE DRIVESHAFT (shown)
	60482	1	4F - 1/2" FEMALE DRIVESHAFT
	60483	1	5F - 5/8" FEMALE DRIVESHAFT
	60484	1	6F - 3/4" FEMALE DRIVESHAFT
8	92695	2	SETSCREW
9	91287	3	HEX HEAD BOLT
10	93475	3	WASHER
11	500-007	4	CAP SCREW
12	60220	1	SANITARY PLATE
13	60379	1	COUPLING
14	60378	1	KEY

KEY	PART #	QTY.	DESCRIPTION
15	5910-2	1	DRIVE UNIT REPAIR KIT
			Contains:
		2	(5) 60447 BEARING
		2	(2) 13125 TEFLON SEAL



NOV. 20/19

TECHNICAL DATA

Maximum Speed: 1100 RPM

Seals: Teflon


Housing: Anodized Aluminum

Bearings: Sealed Ball

Shaft: 440C SS

THE CIRCLE DYNAMICS INC. WARRANTY AND DISCLAIMERS

Items sold by Circle Dynamics Inc. and or all Doyle Products are warranted to be free from defects in material and workmanship for a period of one year from the date of purchase, provided said items are used according to Doyle Products said usages. Circle Dynamics Inc. liability is limited to the repair of, refund of purchase price paid for, or replacement in kind of at the sole option of Circle Dynamics Inc., any items proved defective, provided the allegedly defective items are returned to Circle Dynamics Inc. prepaid. There are no other warranties, expressed or implied, except as stated herein. There are no implied warranties of merchantability of fitness for a particular purpose, which are damages, if the possibility of such incidental or consequential damages has been made know to Circle Dynamics Inc., or is the direct result of a failure of a Doyle Product. Circle Dynamics Inc. reserves the right to discontinue the manufacture of any product or change product materials, design or specifications without notice.

<p>Patent Pending Copyright 2011 Circle Dynamics Inc. All rights reserved. Models and specifications subject to change without notice.</p>	 <p>CIRCLE DYNAMICS INC. DOYLE PRODUCTS MFG.</p> <p>Circle Dynamics Inc. 171 A Rink Street, Suite 150 Peterborough, Ontario, Canada K9J 2J6 Tel: 1-705-768-3338 Fax: 1-705-740-1975 Email: jdoyle@circledynamicsinc.com Web: www.circledynamicsinc.com</p>
--	---